

THE METROPOLITAN MUSEUM OF ART



3 0620 00573840 5




119.8

R532

1926<sup>1</sup>


LIBRARY OF THE  
METROPOLITAN  
MUSEUM OF ART  
NEW YORK



PURCHASED WITH INCOME  
FROM THE  
JACOB S. ROGERS FUND

5551A





Digitized by the Internet Archive  
in 2017 with funding from  
The Metropolitan Museum of Art

J.A. Mook

View from Jan. 12

No. 387

Sale Friday Afternoon, Jan. 15, at 2 o'clock

# PAINTINGS, DRAWINGS

A FEW PRINTS, ETCHINGS, MEZZOTINTS, ETC.

The Property of

MRS. JACK VON TILZER, MR. WALTER  
DORMITZER, MR. AND MRS. FREDERICK  
W. DOEDERLEIN, AND OTHERS



To Be Sold by Auction

Friday Afternoon January 15th, 1926

AT 2 O'CLOCK

On Free View Daily from Tuesday, January 12th, 9.30-5.30

## THE WALPOLE GALLERIES

12 West 48th Street

New York

Telephone Bryant 4140



## PAINTINGS AND DRAWINGS

A FEW ETCHINGS, MEZZOTINTS, ENGRAVINGS, ETC.

THE PROPERTY OF

MRS. JACK VON TILZER, MR. WALTER DORMITZER,

MR. AND MRS. FREDERICK W. DOEDERLEIN

AND OTHERS

INCLUDING GOOD EXAMPLES OF

WM. M. CHASE, JOHN W. ALEXANDER, JOHN TRUMBULL,  
GEORGE INNESS, JOHN LA FARGE, JERVIS McENTEE, CECILIA  
BEAUX, SERGEANT KENDALL, ANDRE CASTAIGNE, ETC.

EARLY SPANISH PAINTINGS OF S. SEBASTIAN AND S. VERONICA  
WITH THE HANDKERCHIEF; JAN LIEVENS, VAN DIEGHEM,  
CHARLET, J. F. BASKE, S. COLMAN, S. PROUT, PALMER COX.  
KEMBLE, ETC.

INTERESTING "PACKAGE LOTS" OF DRAWINGS BY AMERICAN  
ARTISTS FROM THE CENTURY COMPANY.

To Be Sold by Auction

Friday Afternoon, January 15th, 1926

AT 2 O'CLOCK

## THE WALPOLE GALLERIES

12 West 48th Street

New York

Telephone Bryant 4140

---

WALTER S. SCOTT, AUCTIONEER

## Conditions of Sale

1. ALL BIDS TO BE BY LOT. They are executed free of charge by the Walpole Galleries and the items are bought at the lowest price permitted by competitive bids.

2. The highest bidder to be the buyer; in case of disputed bids the lot shall be resold, but the Auctioneer will use his judgment as to the good faith of all claims and his decision will be final. He may also reject any fractional or nominal bid calculated to delay or injuriously affect the sale.

3. Buyers to give their names and addresses and to make such cash payments on account as may be required, in default of which the lots purchased to be immediately resold.

4. GOODS BOUGHT TO BE REMOVED AFTER 9:30 O'CLOCK THE DAY FOLLOWING THE CLOSE OF THE SALE. If not so removed, they will be held at the risk of the purchaser and these Galleries will not be responsible if such goods are lost, stolen, damaged or destroyed. No deliveries will be made during or immediately after the sale, but all bills and goods will be ready at 9:30 o'clock on the day following the sale.

5. TERMS CASH. If accounts are not paid at the close of the sale, or, in the case of absent buyers, when bills are rendered, these Galleries reserve the right to dispose of the goods without notice to the defaulting buyer and all costs of such resale will be charged to the defaulter. This condition is without prejudice to the rights of the Company to enforce the sale contract and collect the amount due without such re-sale at its own option.

6. This catalogue has been compiled by a competent cataloguer, the various lots offered are described with care and accuracy and they will be sold not subject to return.

7. The Walpole Galleries, if requested, will forward purchases at the buyer's risk and expense.

Priced copies of this catalogue at \$2.00 each after the sale.

### THE WALPOLE GALLERIES

LENORE YOUNG TURNBULL

[MRS. EDWARD TURNBULL]

12 West 48th Street, New York, N. Y.

This Sale will be conducted for the Walpole Galleries by  
MR. WALTER S. SCOTT



# PAINTINGS AND DRAWINGS

---

## A FEW ETCHINGS, ENGRAVINGS, MEZZOTINTS, ETC.

---

### PETER E. RUDELL

American: 1854-1899

1. **Water Color. Hill and road: Spring.**  
7"x10". Signed.
2. **House and Sheep: House on the Hill, Westchester Co., N. Y.**  
Two paintings on canvas, unframed. 12"x17". The former signed.
3. **Peaches.**  
Canvas: 12"x8".
4. **Portrait: Painting.**  
10"x8". Man half length, ruff and dark clothes. Panel.

### E. WILLIAMS

5. **Cattle at a River.**  
Water color. Signed. Obl. folio.

### ARMAND APOT

6. **Holy Monday.**  
Priest and kneeling people, soldiers, etc., snow. Obl. folio. Water color. Signed 1916.

### JOSEF TASSONE: 1653-1737

7. **Goats and Cattle: Moonrise.**  
Canvas: 38"x59". Rocky mountainous landscape.

### R. A. BLAKELOCK

Attributed. American Painter: 1847-1919

8. **Indian Camp in the Mountains.**  
Canvas: 22"x36". Moonrise in a stormy red twilight sky.
9. **Mountain Trail.**  
Canvas: 36"x22". Attributed to Blakelock. Great peaks rising to right and left, tones of dull browns and yellows.

## JOHN LA FARGE

Contemporary American Artist

10. **Roses Lying on a Table.**

Canvas: 12"x16". A good example of La Farge.

### P. V. BERRY

11. **Landscape.**

Canvas: 18"x24". Signed. Boy driving cattle at twilight on a wood road.

### E. MEISSONIER: French

12. **Man on the Stairs.**

Panel: 13"x7". Signed. In crimson doublet and hose, a man leans over a landing at the head of stairway near an oriel window.

### WESLEY WEBBER

American Painter: About 1900

13. **Sailboat.**

Canvas: 20"x14". Signed. The artist noted for his marines, of which this is an excellent and colorful example.

### GEORGE INNESS (Attributed)

American Artist: 1825-1894

14. **Landscape.**

Canvas: 24"x27". Signed. Meadow foreground, a half-hidden house in trees to left, from which runs a stream across the middle distance, crossed by a foot bridge.

### JAN VAN LUYTIES

15. **Cattle in a Pool.**

Canvas: 22"x26". Signed. A group of cattle and sheep in a pool overshadowed by summer foliage. Well painted.

### THOMAS HILL

National Academy: 1851

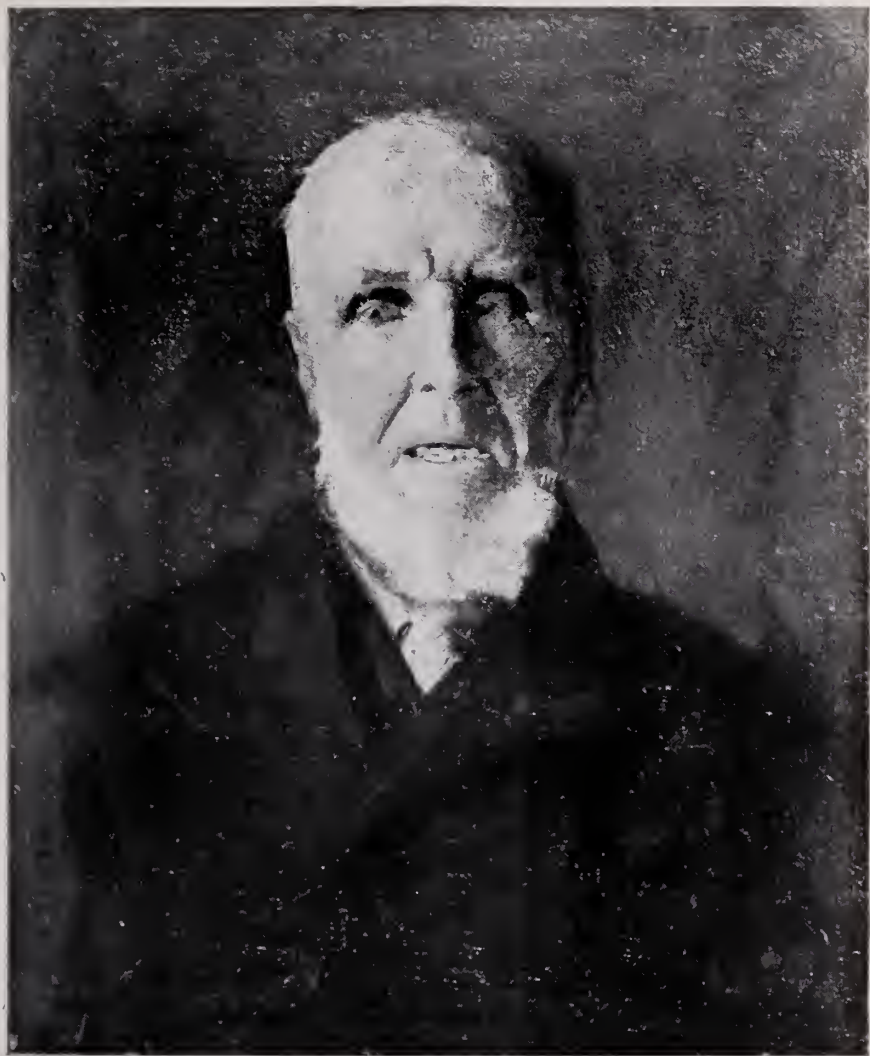
16. **Mountain Waterfall.**

Canvas: 18"x15". Signed. Stream in right foreground, fur and pine slopes, and towering over them green cliffs, over which a thin stream pours in white spray.

### PAINTING ON GLASS

17. **Fish in a Swirling Stream.**

39"x10". A process invented by an artist friend of the owner; very interesting.



No. 18. Chase

**WILLIAM M. CHASE**

Distinguished American Painter: 1849-1916

18. **The Old Fisherman**

Canvas: 20"x24". Signed. Seen at bust length, weather-beaten old bare head, strongly modelled. Owned by a pupil of Chase.

(Illustrated—Plate 1)



No. 19. Chase

19. Model Resting.

Wash: 14"x18". Signed. Showing her seated side-wise on a studio chair, her arm across its back; her back to the spectator. Presented by Chase to a pupil.

A charming study by Chase.

(Illustrated—Plate 2)

\$65.  
20. **A Man: Portrait Study.**

Canvas: 20"x15". Grey hair and mustache, blue eyes, wearing a brown coat, Indian red tie.

Certificate pasted on the back: "*This head was painted by Wm. M. Chase in my presence.—F. W. Doederlein, pupil and friend*" (of W. M. Chase).

21. **Young Girl with a Riband.**

Woodcut. By H. Wolf, after the painting by Chase.  
SIGNED PROOF ON INDIA PAPER BY CHASE.

22. **Children Picking Flowers.**

Woodcut. By Wolf. China paper proof, after the painting by Chase.

**FREDERICK DOEDERLEIN**

American Artist, Contemporary, Pupil of Chase

23. **The New Blue Dress.**

Canvas: 58"x24". Little girl, with long curls, standing; hands clasped at her back.

**FRAMES FROM THE SUPPLY OF AN ARTIST**

Artists and others will appreciate how difficult it is to get these really good frames made up and in good condition.

24. **Handsome Carved and Silvered Wood Frame.**

41"x60".

25. **Carved and Gilded Wood Frame.**

34"x30".

26. **Three Carved Wood Frames.**

55"x57" to 38"x34".

27. **Three Carved Wood Frames.**

55"x57" to 38"x34".

28. **Three Carved Wood Frames.**

55"x57" to 38"x34".

29. **Four Carved Wood Frames.**

38"x32" to 31"x24".

30. **Four Carved Wood Frames.**

38"x32" to 31"x24".

31. **Five Carved Wood Frames.**

38"x32" to 31"x24".

**THREE UNSIGNED PAINTINGS**

32. **Chinese Girl in Blue.**

Canvas: 12"x8". She leans over a balcony overlooking a lotus pool; blue and subdued tones; unusually well executed.

33. **Infant St. John and Lamb.**

Canvas: 7"x8". Kneeling, giving the lamb a drink from a blue bowl.

34. **Woodcock Suspended from a Nail.**

Panel: 13"x9".

## CHARLET

35. "Wagram, 1809."  
Painting on ivory by Charlet, dated 1828, bought in Paris in 1872 by N. Appleton. 5"x4". Original frame.

## J. F. BASKE

Contemporary Japanese Artist

36. Fisherman, Early Morning.  
Water color, 1907. Folio. Signed.
37. Group of Fishing Boats in Early Morning.  
Water color, 1907. Folio. Signed.
38. Iris Pond.  
Water color, 1907. Sm. folio. Signed.
39. Village Seen from a Bamboo Forest.  
Water color, 1907. Folio, no glass. Signed.

## AMERICAN AUTHORS

40. Photographs.  
Whittier, Lowell, Longfellow, Emerson, Holmes, Bryant. Framed in ovals in a long panel.

## S. CHASPARD: 1870

41. Spanish Street and Church.  
Water color: 10"x20". Signed.
42. Water Color. Unsigned.  
6"x12". Classic temple and fountain, against an apricot sky.

## ENGLISH SCHOOL: 18th Century

43. Head of a Young Woman.  
Panel: 7"x4". Fair hair dressed high, dark dress, her hand fingering the beads at her high collar, with white lace ruffle.

## DUTCH SCHOOL: 18th Century

44. The Mob Cap.  
Panel: 7"x5". A woman, fair skin, wearing a cap tied with orange ribbon; seen at half length in blue dress with white collar.

## S. P. R. TRISCOTT

45. Water Color.  
10"x14". Signed. Mountain road near a river; low tones.
46. Water Color.  
Signed by Triscott. 10"x14". Rocky coast, sailing boats in the distance. (Companion to preceding.)

## FRENCH SCHOOL PAINTING

47. Diana and Endymion.  
Canvas: 29"x54". Early 18th Century French painting.

## BREWSTER: 1874

48. **Mountain Lake.**  
Pastel: 28"x22". Signed, framed with arched top in walnut, beautifully done.
49. **Mountain Stream.**  
28"x22". Pastel, framed as companion to the preceding. Signed.

## DUTCH SCHOOL PAINTING: 17th Century

50. **Returning from Market.**  
Panel: 13"x16". A sweep of meadow sloping to the foreground, down which are being driven the cattle; trees in the background. Rich and soft old tones.

## H. RUSTIGE

### BELGIAN SCHOOL: 19th Century

51. **The Fish Vendor.**  
Panel: 12"x10". Seen at half length with basket and tub; holding up a fish.

## ITALIAN SCHOOL

52. **Venetian Sunset.**  
Large canvas: 40"x53". Shows influence of J. M. W. Turner, beautifully painted. Framed with arched top.

## JAN LIEVENS

Pupil of Rembrandt. Dutch: 1607-1674

53. **Queen Esther Before Ahasuerus.**  
Canvas: 56"x70". A group painting of the 17th Century, with the rich color and fulness of line characteristic of the period, the figures nearly life size.
- Lieven's was a pupil of Rembrandt, and a similar painting by the former is in the Art Gallery, Brussels; and it is believed that the large Gobelin Tapestry in the entrance hall of the Metropolitan Museum, New York, has been copied from that painting.

Purchased by Mrs. Henry Dormitzer from a private Gallery of a nobleman in Munich, Germany, in 1869.

## PRINTS, ETCHINGS, ENGRAVINGS, ETC.

### FREDERICK CHAIGNEAU

54. **CHAIGNEAU (FREDERICK). Feeding Sheep.**  
Painter etching. Signed artist's proof. Folio.
55. **CHIESA DELLA SALUTE.**  
Large colored Venetian photograph showing the Palace; also THE FATES: Large photo framed in blue velvet and silvered wood. (2)

[Prints—*Continued*]

56. **GOWANS (PETER).** *Brook and Meadow.*  
Signed proof etching on satin. Engravings of Rubens' Wife, Landscape after Constable; Fontainebleau; two by Wilmore. (6)
57. **ROBERTSON (H. R.).** *Pheasant Shooting.*  
Etching after Whymper. Artist's proof signed by both. Folio; Landscape etching, signed artist's proof by H. L. Field; Photo of Watts' Sir Galahad. (3)
58. **SLOCOMBE (FRED).** *The Rookery.*  
Etching. Sichel's "Almee" (photograph); Can't You Talk? (Child and Dog), mezzo. by Sobel (no glass). Folio. (3)
59. **SHEEP.**  
Etching, good example; Canal at Rotterdam; Lunch; deer at moonrise; cattle drinking; landscape in color (after Serra). (6)
60. **THORWALDSEN.**  
Engraved after Amsler; Raphael's Madonna, eng. by Dupont; Raphael 1518 photograph. 4to. (3)

---

**AMERICAN WATER COLOR: 1855**

61. **Harbor Scene, Possibly New York.**  
10"x17". Showing the early side paddle wheel steam vessels "Union" and "Expounder." Signed "M. G. W., 1855," and beautifully painted.

**GEO. H. JEWELL**

62. **Convent Near Rome.**  
Canvas: 5"x8". Signed. Mt. Soracti in the distance. "Geo. H. Jewell to his very dear friend, Bayard Taylor, Dec. 25, 1871."

**S. COLMAN**

63. **Street Scene: Grenada, Spain.**  
Water color: 9"x7". Signed.

**JERVIS McENTEE**

64. **Drifting Ice.**  
Canvas: 10"x16". Signed. Very pleasing picture, dated 1876, resembling the beginning of the Palisades on the Hudson.

**P. C. ROGERS: 1888**

65. **Water Color.**  
7"x13". Ships. Framed.



## SERGEANT KENDALL

66. **Pastel.**

20"x12". Portrait of Mrs. ——— seen at half length, wearing hat, coat and gloves. Signed. Framed.

67. **Pastel.**

Signed. 7"x8". Edge of a wharf from which a lady descends to a sail-boat.

## HELENA STURTEVANT

68. **Water Color: 1907.**

Trinity Church, Newport. 18"x12". Signed. Framed.

69. **Moonrise on the River.**

Pastel: 8"x13". Signed (undecipherable).

70. **Pastel.**

12"x9". Framed. Park with marble balcony and a pool in which tall trees are reflected.

## JOHN TRUMBULL

American: 1756-1843

71. **Washington.**

Small bust portrait of Washington in a cocked hat, done in sepia, on vellum. 6"x4". Signed "J. T., 1776." In a 2½" maple frame; an old American paper, "Original Moral Tales" pasted on the reverse.

72. **John Jay and John Hancock.**

Two pen drawn portraits. Bust Lengths, 7"x5" each, and signed "J. T., 1786." Mounted in an old gilt frame.

## JAN BOTH

Dutch Painter: 1610-1652

73. **Waterfall and Mountain Landscape.**

Water color: 16"x20". Soft neutral blues and wood browns, characteristic of Both's work (foxed).

## ENGLISH WATER COLOR: 18th Century

74. **Landscape with Hills and Castle.**

20"x26". Seen against a pale grey and yellow sky. Signature (undecipherable).

## SAMUEL PROUT

English Artist: 1783-1852

75. **English Coast Scene.**

Sepia: 8"x11". Curving shore, sailboat. From the Falconer Collection.

## D. VARLEY

English 18th Century Artist

76. **Castle and Swift Stream.**

Water color: 8"x12". Signed. Rocky foreground, with lacy foliage to left. Well painted.



No. 77. Spanish, 16th Century

SPANISH PAINTING: 16th Century

77. Saint Sebastian.

Canvas: 32"x28". Framed. Half length, the torso bare, pierced by an arrow; head dropped forward; an old canvas and of fine tone.

Purchased by the uncle of the owner in Europe a great many years ago.

(Illustrated—Plate 3)



No. 78. Spanish School

### SPANISH SCHOOL PAINTING

**78. S. Veronica with the Handkerchief.**

Canvas: 30"x24". Framed. S. Veronica, seen at half length, her head wound in blue drapery, holds up the Napkin on which is seen the Head of the Saviour crowned with thorns.

Purchased by an uncle of the owner in Europe many years ago, and believed by the family to be the missing original called the "Santa Faz" or Holy Face, formerly on the high Altar of the Capuchin Church, Seville, and sent away to escape the clutches of Napoleon—and not returned with others after the French left Spain.

( Illustrated—Plate 4 )

**J. J. HENNER**

French: 1829-1905

**79. Head of Girl.**

Profile to left. Loose red hair on her houlders. Panel: 9"x12". In dull bronzed frame.

## UNSIGNED PAINTING

80. **Landscape.**

Canvas: 24"x32". Hills rise at either side of the foreground opening to disclose a far distant valley, winding stream and golden horizon.

**VAN DIEGHEM**

Dutch Painter, 18th Century

81. **Shepherd Resting.**

Panel: 6"x8". Signed. Seated on a log, his back to the spectator, sheep in the foreground. Well painted and carefully cradled.

82. **Stable Door and Sheep.**

Panel: 6"x8". Signed by Van Dieghem. Hay rick and lamb, a goat resting. Beautiful little panel, carefully cradled.

## ITALIAN SCHOOL PICTURE

83. **Musicians.**

Canvas: 11"x13". Strolling players, shepherd boy with pipes, woman with tambourine, etc.

— — **SUGUNDE**

84. **Learning to Sew: Helpful Sister.**

Panels: 9"x7". Signed. Companion paintings. Little girl beside her mother, who is teaching her to sew; little girl helping her brother to dress. (2)

**C. KUWASSIJ, Fils**

French Painter: 1860

85. **Venice.**

Canvas: 13"x9". A good picture; houses and canal.

**J. BARON: 1869**

86. **Children.**

Panel: 14"x10". Boy painting the cheeks of a doll for a little girl.

## UNSIGNED PAINTING

87. **Fruit and a Glass of Wine.**

Canvas: 12"x16". On a marble table.

## PRINTS

**L. ALMA TADEMA**

88. **A Kiss (After His Painting).**

Del Sarto's S. Jean (fine large photograph); Prayer (colored print of a child); Alderney: mezzo by Alais (large folio, damaged). (4)

**F. BACON**

89. **John Bunyan in Bedford Jail.**

Mezzotint, 1851. Gautier's mezzotint of Paul and Virginia. Folio. (2)

## SAMUEL COUSINS

90. **Ninette (Child's Head).**

Fine India proof mezzotint by this well-known English artist, after Greuze. 4to.

## F. O. C. DARLEY

91. **The Young Artist: 1888.**

Fine reproduction of a Darley drawing. 4to.

## P. W. NAHL: 1915

92. **Monterey Cypress.**

Signed proof monotone. Sm. 4to.

## C. L. HINTON

93. **The First Day at School.**

Little girl. Pencil drawing. Signed and dated 1901. 4to.

94. **The First Sweethearts at School.**

Pencil drawing by C. L. Hinton. Signed. Large 4to.

95. **Finis: Last Day of School.**

Pencil drawing by Hinton. Signed and dated. Obl. 4to.

96. **NASTURTIUMS: PETUNIAS.**

Two color prints on gold ground, with arched top. Sm. folio. (2)

## C. A. PLATT

97. **The Little River Hartford.**

Etching. Signed proof; painter etching on Japan paper. Fine early piece.

## R. W. SEWELL

98. **Bridge and Reeds.**

Etching. Signed artist's proof with remarque, rustic frame. 4to.

99. **Canal and Houses, Dordt.**

Etching by Sewell. Signed proof. Folio.

100. **Walls of Prague, and Another.**

Etchings by Sewell. (Signed proof.) 4to. (2)

101. **NIAGARA FALLS.**

Two views. Two handsome large photographs. Framed. 20"x20".

102. **SHEEP ON A MOUNTAIN ROAD.**

Grey-green carbon print with grey-green frame; Highland Cattle (2); Landscape, after Davis. Fine photogravures, etc., nicely framed. (4)

[Prints—Continued]

103. **HIGHLAND MARY.**

(By Simmons, after Faed); mezzotint. Lond., 1857; Countess Potocka, engraving. 1872; Madonna della scala (Correggio), by Toschi. (3)

104. **ETCHINGS.**

Elephants at a Water Hole (unsigned); Waltner's First Communion; Forest Scene (Delauney); Canal, Donnard, after Martin Snape (folio). 4to. etc. (4)

---

**PAINTING IN GUACHE: About 1800**

105. **Castle on a Lake.**

10"x14", fine silvery tone.

**HANS CHRISTIAN ANDERSEN**

Author of the Fairy Tales

106. **Mosque and Windmill.**

White "silhouettes." signed and dated 1868. Sm. 4to. (2)

**ELEANOR COOPER**

107. **Broadwater Mill.**

Water color: 7"x10". Inscription on the back.

**FRENCH SCHOOL: 19th Century**

107A **Fruit in an Osier Basket.**

Canvas: 19"x24". A glass jar of flowers, etc., decorative piece of good quality.

**ENGLISH PAINTING: Early 19th Century**

108. **Head of a Turk.**

Canvas: 9"x11". Head to right, beautifully painted.

**ENGLISH WATER COLOR: 1873**

109. **Cairo.**

Two Arab women seated. Signed. 7"x9".

**ITALIAN SCHOOL: 17th Century**

110. **Head of the Virgin.**

Panel: 12"x9". A fine small panel, with an old signature, and date 1675 near the head.

111. **Inlaid Wood Panel.**

Italian: 1650. 8"x6". Hercules and the Lion.

**JOHAN JACOBSON**

Danish School: 19th Century

112. **Winter Scene.**

Canvas: 12"x14". Man approaching a thatched cottage, eaves heavy with icicles. No frame.

**AD. KITTENDORF**

113. **White Horse Resting.**  
Water color: 3"x5". Signed.

**K. E. K., DANISH PAINTER: 1855**

114. **Winter Landscape and Castle.**  
Canvas: 30"x40". Signed. Well executed, good detail.

**A. WILLETTE**

115. **Napoleon's Retreat from Moscow.**  
Original lithograph, very fine. Has been folded, and is now mounted on cardboard, slightly ragged at the corners. 24"x30".

**JOHN W. ALEXANDER**

Contemporary American Artist

116. **John G. Nicolay.**  
Portrait study, 1886. Half length, seated. Original pencil drawing: 24"x40". Signed and dated.
117. **Alphonse Daudet.**  
Portrait study: 25"x21". Original pencil and crayon drawing, bust. life size. Signed by Alexander, and dated, Paris, 1886.
118. **The Giant's Causeway.**  
7"x10". Original wash drawing, touched with white. Signed J. W. A.
119. **Ackerman & Co.**  
View of the Transept of the great Exhibition, Hyde Park. Colored lithograph by Day & Son. Elephant folio (slight damage), mounted on cloth.

**CECILIA BEAUX**

Contemporary American Portrait Painter

120. **Gen. Wainwright.**  
Portrait Head. 16"x24". Pencil study in black, using tint on the face, on brown paper. Very effective.
121. **Richmond P. Hobson.**  
Portrait study by Miss Beaux. 24"x15". Original pencil drawing. Very fine.

**NORMAN IRVING BLACK**

122. **A Lapp Fortune Teller.**  
Smoking a pipe. Very fine original pencil drawing. 12"x9". Signed.

### ANDRE CASTAIGNE

123. Chariot of Darius in the Thick of the Fight.  
Pencil drawing, touched with white on canvas:  
34"x24". Signed, New York, 1898.
124. Night: Ruins at Athens.  
A few sheep feeding in the dim light. Very effective  
original wash drawing, by Castaigne. Signed and dated  
1896. 20"x34" on canvas.

### KENYON COX

125. An Algerian Woman.  
Pen drawing. Signed, 1885, "after a photograph."  
16"x10".
126. Nude.  
Pencil drawing, after Olin L. Warner, 1888.  
17"x13". Signed by Cox. No glass.

### PALMER COX

127. Three Original Drawings.  
9"x6". Mounted in the same frame as a panel,  
humorous and clever pictures of the bears, foxes and  
rabbits. Each signed.

### MAURICE GREIFFENHAGEN: 1900

128. Firing of St. Peter's Church in the Middle Ages.  
Original wash drawing: 18"x12". Signed.
129. Cromwell's Veterans on the March.  
Original wash drawing by Greiffenhagen, 18"x11".  
Signed.

### JULES GUERIN

130. Architectural Drawing.  
Original pencil on canvas: 26"x22". Signed.
131. Square at Beverly, Mass., from the Railway Station.  
Wash drawing: 12"x15". Signed.
132. Fed by the Elephant.  
Wash drawing: 16"x10". Signed.
133. Architectural Drawing.  
22"x30". Original pencil drawing on canvas. Signed.  
Night view of a building of classic form.

### LEON GUIRON

134. Lancelot and Guinevere.  
28"x18". Wash drawing on canvas. Signed.

### OLIVER HERFORD

135. Man Proposes.  
Original pen drawing. Signed. 10"x15".



**L. JONAS: 1915**

136. **Liberty.**  
24"x18". Signed. Original black crayon drawing.

**E. W. KEMBLE**

137. **"Whoa" (Country Boy).**  
Original sepia drawing: 13"x8". Signed.

**J. A. S. MONKS**

138. **Ox Team: and Oxen Hauling Marble.**  
Two companion wash drawings; the latter signed.  
12"x18". (2)

**ERIC PAPE**

139. **The Young Napoleon Telling Fortunes.**  
Original wash drawing, signed and dated 1894. No  
glass. 28"x18".

**JOSEPH PENNELL**

Contemporary American Artist

140. **The Founder's Tomb.**  
Original pencil drawing. Signed. 14"x10". No  
glass.
141. **Chelsea Hospital.**  
13"x20". Original pencil drawing with title and date  
by Pennell, 1885.
142. **Winchester: In the Close.**  
Original pen drawing by Pennell, beautifully finished.  
14"x11". (Slight tear near bottom edge.)

**ROSENMEYER: 1899**

143. **Napoleon (Asleep in a Chair).**  
Original color and wash drawing. Signed. 22"x14".

**F. HOPKINSON SMITH**

144. **Minaret, Sofia.**  
Original wash drawing on toned paper. 20"x7".  
Signed (initials).

**ALBERT E. STERNER**

145. **Children Skating.**  
Pen drawing. Signed and dated, 1886. 12"x16".

**DANIEL VIERGE**

146. **Battle Piece: Franco-Prussian War.**  
Original wash drawing. Signed. 16"x22".

## G. WRIGHT

147. In the Nature of a Hero, There Was a Flash of Fire at the Horse's Head.  
Original crayon and wash drawing in black and tint. 26"x18". No glass. Signed.
148. Pair Handsome Circular Walnut Frames.  
Diameter, 20". Inner gold rims; fine for mirrors. (2)
149. Print Cabinet.  
H. 48", L. 59", W. 13". Oak: sloping let-down and extended front, on rollers. Large size and very useful. Good condition.
150. Drawings. Pen and wash, by the Artists of "The Century Magazine." (25)  
This and the following lots represent practically all of the leading American artists of this and the past generation.
151. Drawings. Another lot, similar. (25)
152. Drawings. Another lot, similar. (25)
153. Drawings. Another lot, similar. (25)
154. Drawings. Another lot, similar. (50)
155. Drawings. Another lot, similar. (50)
156. Drawings. Another lot, similar. (50)
157. Drawings. Another lot, similar. (50)
158. Drawings. Another lot, similar. (50)
159. Drawings. Another lot, similar. (50)
160. Drawings. Another lot, similar. (50)
161. Drawings. Another lot, similar. (100)
162. Drawings. Another lot, similar. (100)
163. Drawings. Another lot, similar. (100)
164. Drawings. Another lot, similar. (100)
165. Drawings. Another lot, similar. (100)



## *Season 1926*

Japanese Color Prints, from the Estates of Mrs. A. P. L. Dull and Mr. and Mrs. J. C. Lalor.

Firearms, Edged Weapons and Books on Arms from the Estate of R. G. Bickford of Newport News, Va.

Period Furniture, Paintings by Chase, Fine Bronzes, etc., of Mrs. Hilda Doederlein of the Chelsea Hotel, New York.

Collection of Books and Prints of the late John Davis of Hannibal, Mo.

A Fine Selection of Handsomely Bound Books, Hebraica, etc.

The Residue of the Stock of Prints of the late F. Meder, well-known Dealer and Expert.

Early American Furnishings, Glass, Pewter, Pine and Maple, Currier & Ives Prints, Bottles, etc.

The Seventh Part of the Dramatic Collection of the late Wm. Winter.

Japanese Color Prints and Books from Private Collections, including those of Mr. Charles Weldon.

Japanese Netsuke, Armor and Weapons.

Part III. Old Colored Glass, Staffordshire, Brass and Bronze.

Part IV. Etchings and Engravings of the Countess von Holstein-Rathlou of Copenhagen.

Part V. Water Colors and Drawings of the Same Lady.

The Collection of Mrs. Jennette R. Rowell of New York, Sold by order of E. W. McGuire and C. H. Thayer, Executors.

---

## THE WALPOLE GALLERIES

12 WEST 48TH STREET, NEW YORK

Holding Weekly Sales of Literary and Artistic Material.





THE METROPOLITAN  
MUSEUM OF ART

*Thomas J. Watson Library*

